

iTALIC



Tome Kovačević

iTALC

- iTALC je program koji je razvijen posebno za rad u školama
- iTALC je korisno i snažno didaktičko sredstvo za učitelje
- Omogućuje pregled i upravljanje drugim računalima u mreži tj. uvijek imate potpunu kontrolu nad svojom učionicom
- Preuzimanje je besplatno, ali ako koristite iTALC, zapamtite stotine sati koji su potrošeni u razvoju ovog softvera.
- Izvorni kôd je slobodan
- Podržava Linux, Windows XP, Vista i Windows 7



Komercijalni ekvivalentni programi

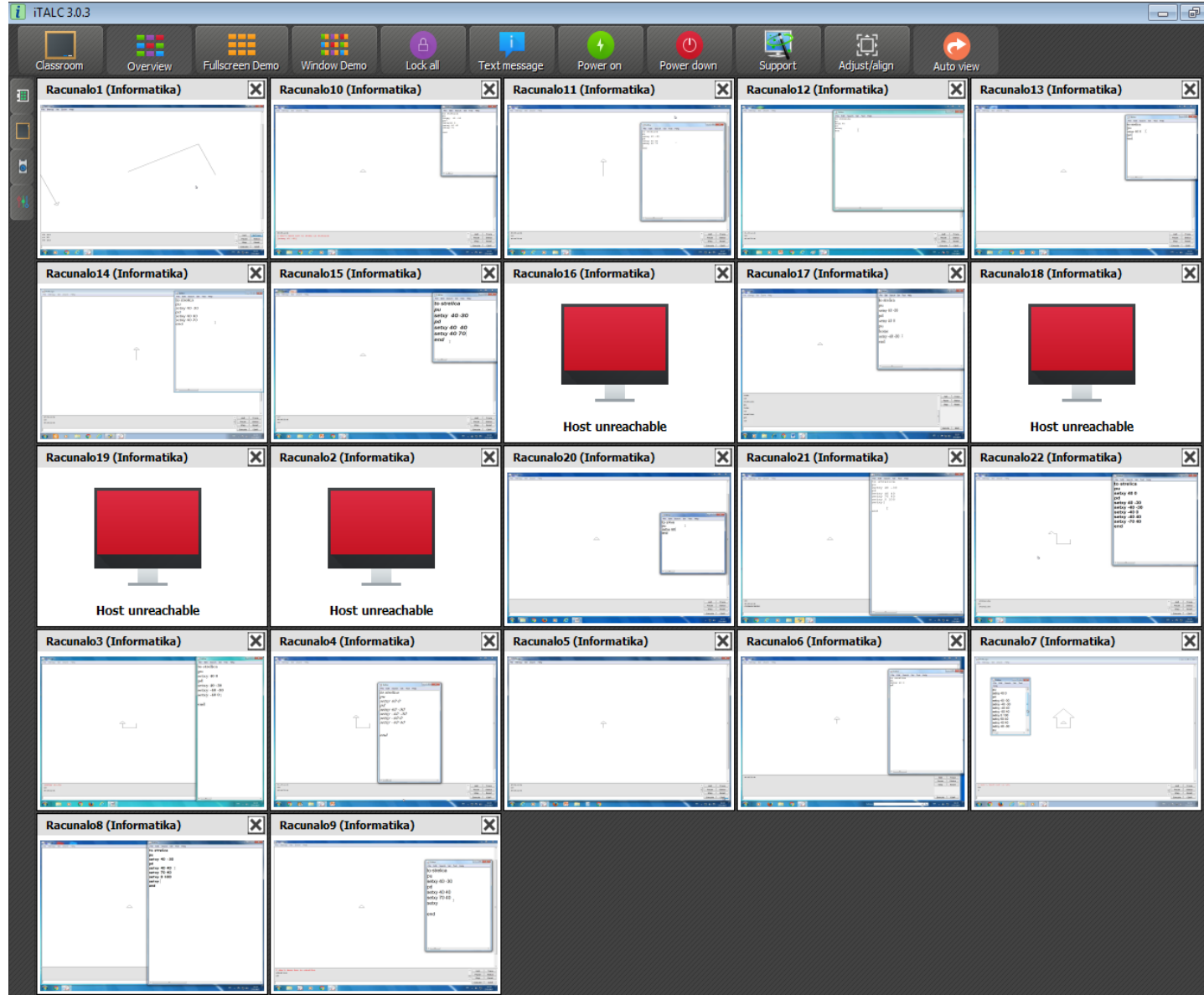


\$ 169.00
1 instruktor i 20
studentskih
licenci za učenje

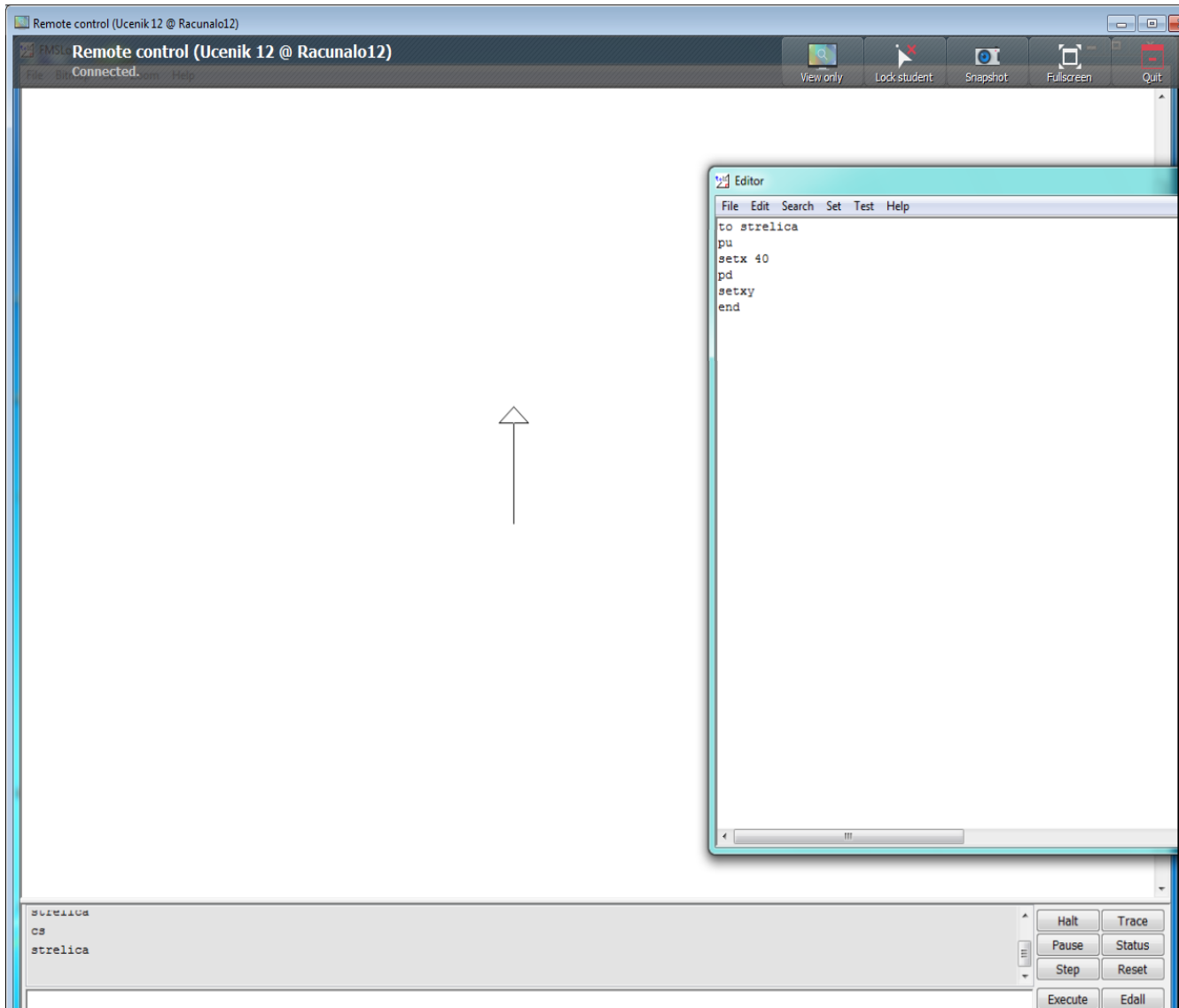


Monitor studenata

- Pratite učenike/studente pomoću prikazanih ikona
- Ostale značajke poput snimke zaslona, internetske povijesti i praćenja tipki pomažu u održavanju sigurne okoline za sve učenike



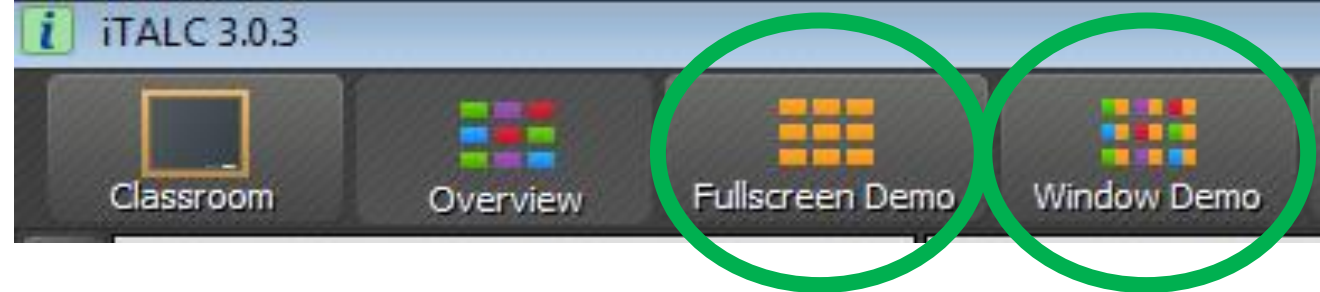
Preuzimanje zalona učenika



- Ako jedan od učenika/studenta treba pomoć, možete pristupiti radnoj ploči učenika/studenta i poticati se
- Učenik/student vidi sve vaše akcije i tako je u stanju naučiti nove postupke



Demonstracija



- Prostor na zaslonu učitelja prenosi se na sva ostala računala u stvarnom vremenu
- Fullscreen Demo – učiteljev zaslon se dijeli. Učenik/student ne može raditi u ovom načinu jer su svi ulazni uređaji onemogućeni. Na taj način dobivate punu pozornost vaših učenika
- Window Demo - učiteljev zaslon se dijeli, ali i omogućuje učenicima/studentima da se prebace između nastavnikovog prozora i vlastitog prozora. Ulazni uređaji nisu blokiranih



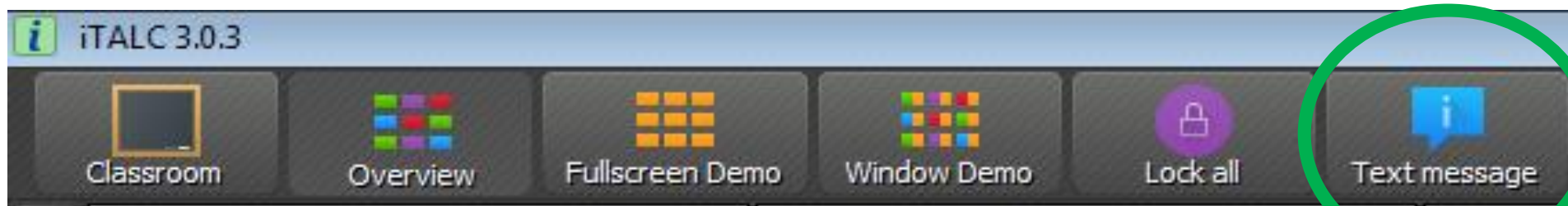
Usmjeravanje pažnje

- Značajka Lock all omogućuje učitelju usmjeravanje pažnje svih učenika na prednji dio učionice zaključavanjem svih računala i blokiranjem ulaznih uređaja
- Držite svoje učenike fokusiranim na zadatak, ograničavanjem njihovog pristupa određenim web stranicama i aplikacijama



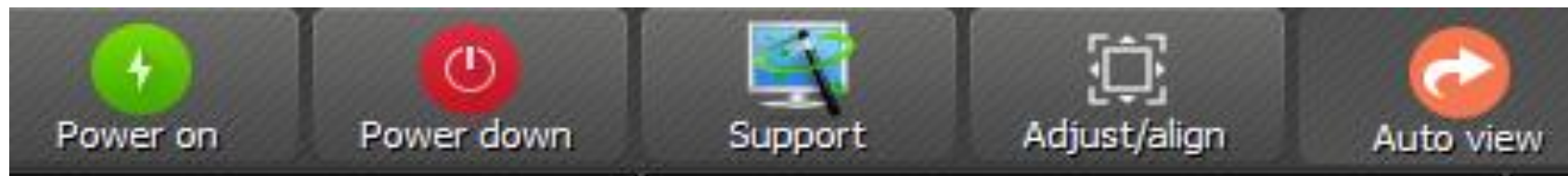
Komunicirati

- Komunikacijske značajke pomažu nastavnicima učinkovitije komunicirati s učenicima unutar učionice
- Učitelji mogu poslati poruku kako bi pomogli učeniku/studentu, razgovarati s pojedincem ili grupom studenata i brzo odgovoriti na pitanja



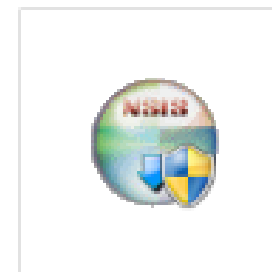
Uštedite vrijeme

- Povećajte dragocjeno vrijeme učionice pomoću brzih alata i prilagođenih postavki
- Pošaljite i skupite zadaće domaće zadaće
- Jednim klikom uključivanje/isključivanje svih računala u mreži







Instalacija programa

www.italc.sourceforge.net



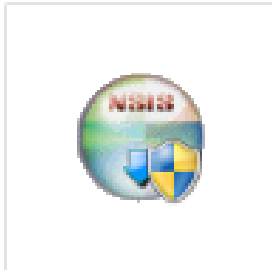
italc-3.0.3.0-win64-setup

Downloads

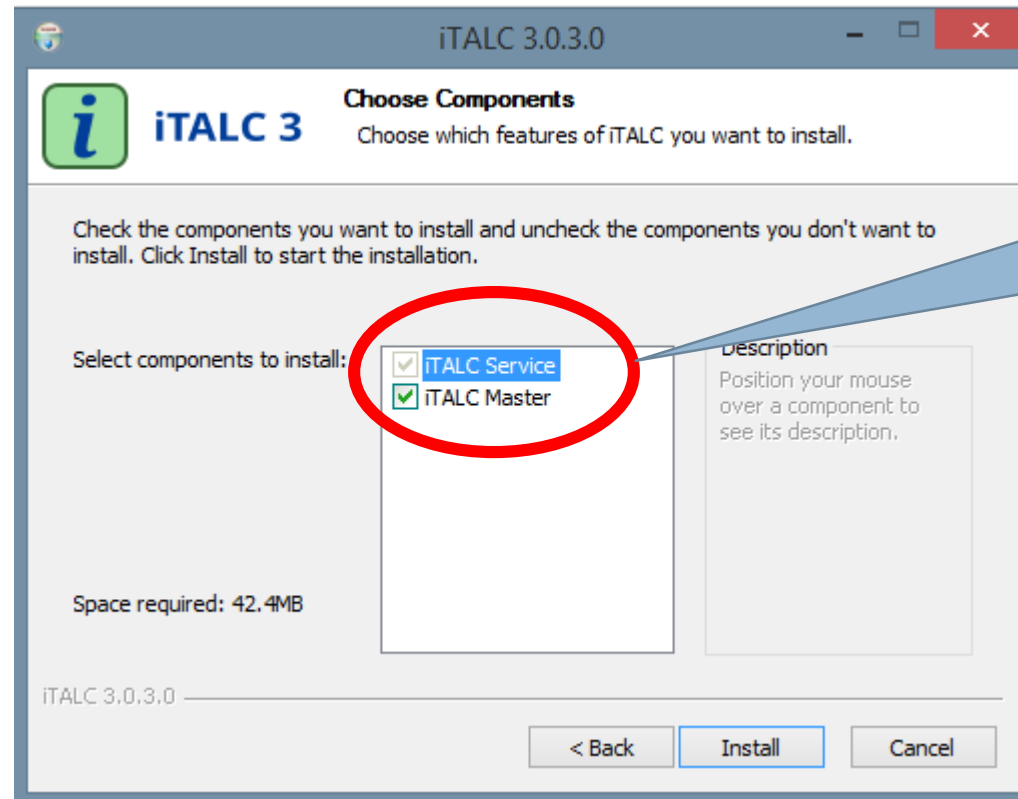
 italc-3.0.3.0-win32-setup.exe	11.3 MB
 italc-3.0.3.0-win64-setup.exe	11.9 MB
 Source code (zip)	
 Source code (tar.gz)	



Instalacija programa - računalu nastavnika

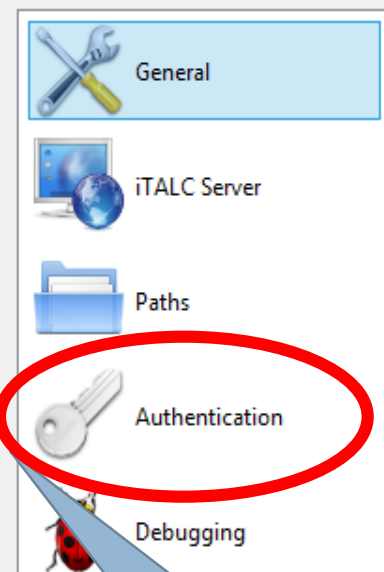


italc-3.0.3.0-win64-setup



Obavezno ostaviti uključeno iTALC Master na računalu nastavnika





User interface

 Enable high DPI scaling

Language: Use system language setting

iTALC Service

 Hide tray icon Enable desktop switching for screen lock (experimental) Autostart

Additional arguments

State: **Running**

▶ Start service

⏻ Stop service

Logging

Log file directory %TEMP%

Log level Information, warnings and errors

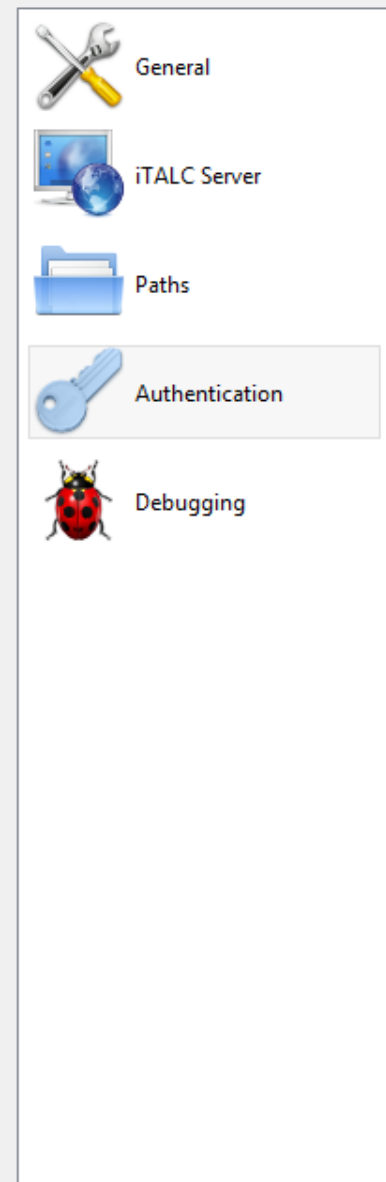
 Limit log file size 0 MB Log to standard error output Log to Windows event log

🗑️ Clear all log files

Nakon instalacije i prvog pokretanja programa pojavljuje se izbornik iTALC management u kojem je potrebno odabrati Authentication

Reset

Apply



General

iTALC Server

Paths


Authentication

Debugging

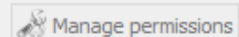
Authentication methods

 Key file authentication ACL-based logon authentication

Access key management

Public key file base directory Private key file base directory  Launch key file assistant

Logon settings

 Test

Access confirmation

You can configure iTALC to ask the user for permission to access the desktop when using certain authentication methods.

 Key file authentication Logon authentication Allow same user to access desktop without confirmation

- 1) Isključiti ACL-based logon authentication
- 2) Odabrati Launch key file assistant

Reset

Apply

Create/import iTALC access keys

This assistant will help you to create or import iTALC access keys.

How does it work?

iTALC access keys consist of two parts belonging together, a private and a public key part.

Using the private key part, users on the master computer will be able to access client computers. It is important that only authorized users have read access to the private key file.

The public key part is used on the client computers to verify that any incoming connection request is authorized.

Select user role

Please select a user role for which to create or import the access keys:

Teacher



User roles allow using multiple access keys in parallel. For example there can be different teacher access keys for each classroom while the support access keys are the same for the whole school.

< Back

Next >

Cancel

Računalo nastavnika

Assistant mode

Please choose whether to create new access keys or import a public key on a client.

- Create new access keys (master computer)
- Import public key (client computer)

Directories

- Export public key part (master computer)



- Use custom destination directory for access keys

C:\ProgramData\iTALC\keys\private



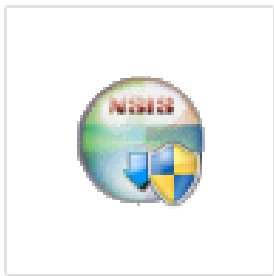
Export public key na radnu površinu i napraviti će Vam italc_public_key.key koji zajedno s programom prebacite na USB

< Back

Next >

Cancel

Instalacija programa - računalo učenika/studenta

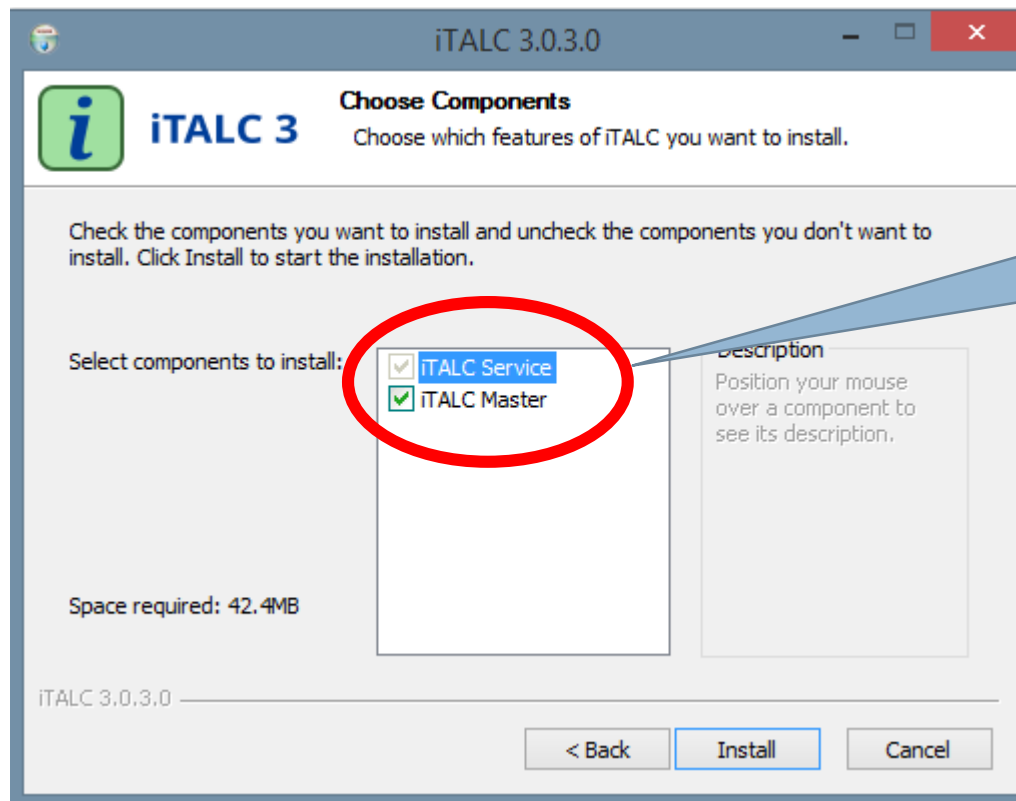


italc-3.0.3.0-win64-setup



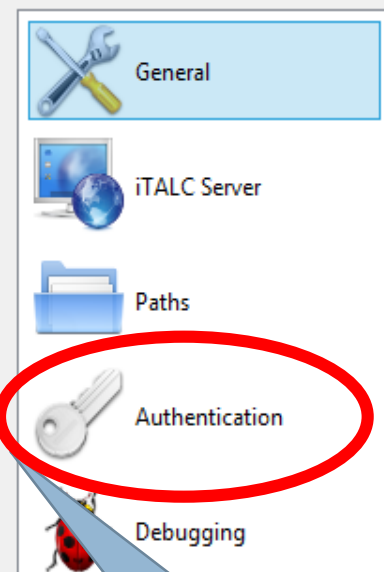
italc_public_key.key.txt

Potreban Vam je italc.setup i italc_public_key koji ste napravili na računalu profesora. Pokrenete na računalu učenika setup programa i slijedite upute



Obavezno isključiti iTALC Master na računalu svih studenata





User interface

 Enable high DPI scaling

Language: Use system language setting

iTALC Service

 Hide tray icon Enable desktop switching for screen lock (experimental) Autostart

Additional arguments

State: **Running**

▶ Start service

⏻ Stop service

Logging

Log file directory %TEMP%

Log level Information, warnings and errors


 Limit log file size 0 MB Log to standard error output Log to Windows event log

🗑️ Clear all log files


Nakon instalacije i prvog pokretanja programa pojavljuje se izbornik iTALC management u kojem je potrebno odabrati Authentication

Reset


Apply




General




iTALC Server



Paths



Authentication






Debugging


Authentication methods

 Key file authentication ACL-based logon authentication

Access key management

Public key file base directory Private key file base directory  Launch key file assistant

Logon settings

 Manage permissions Test

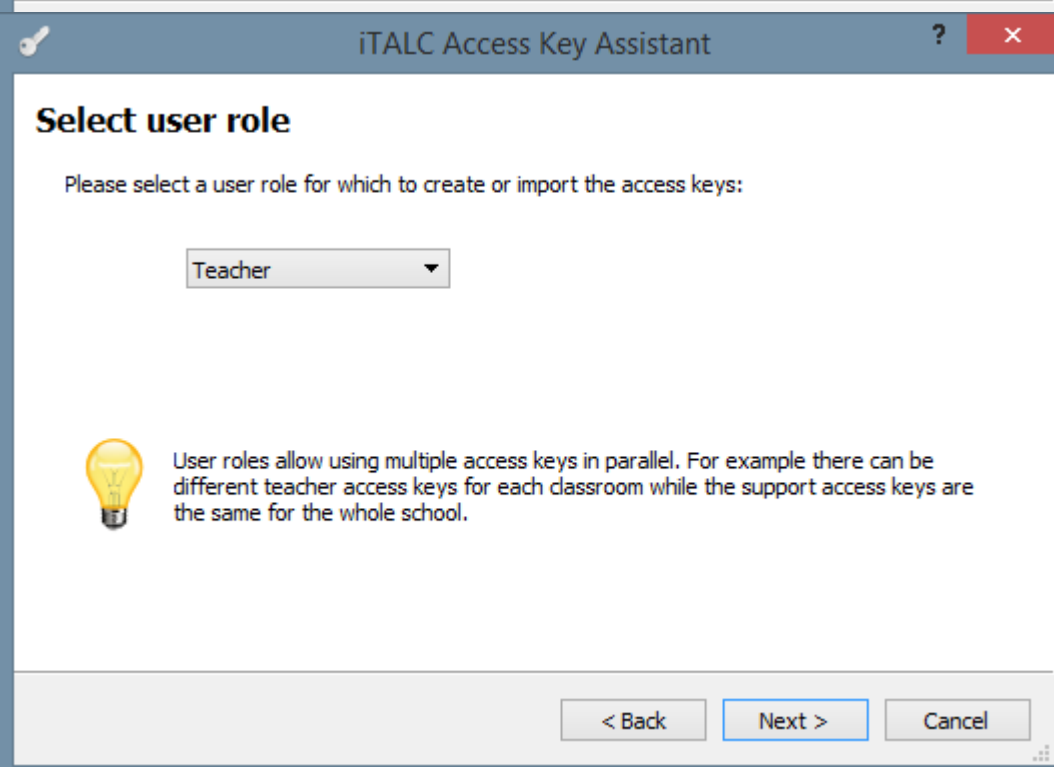
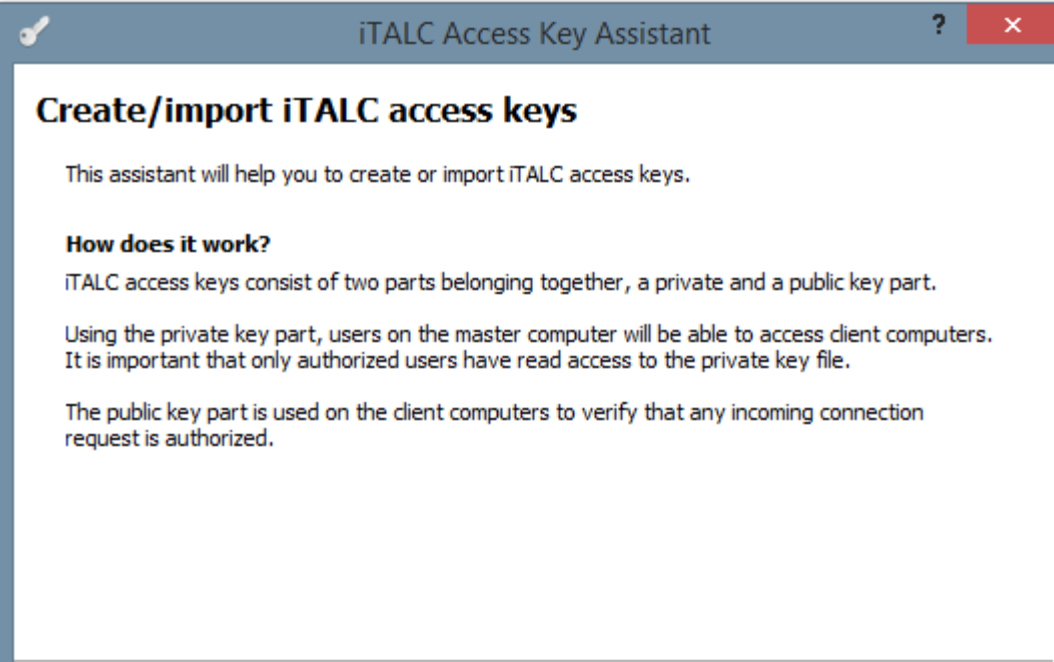
Access confirmation

You can configure iTALC to ask the user for permission to access the desktop when using certain authentication methods.

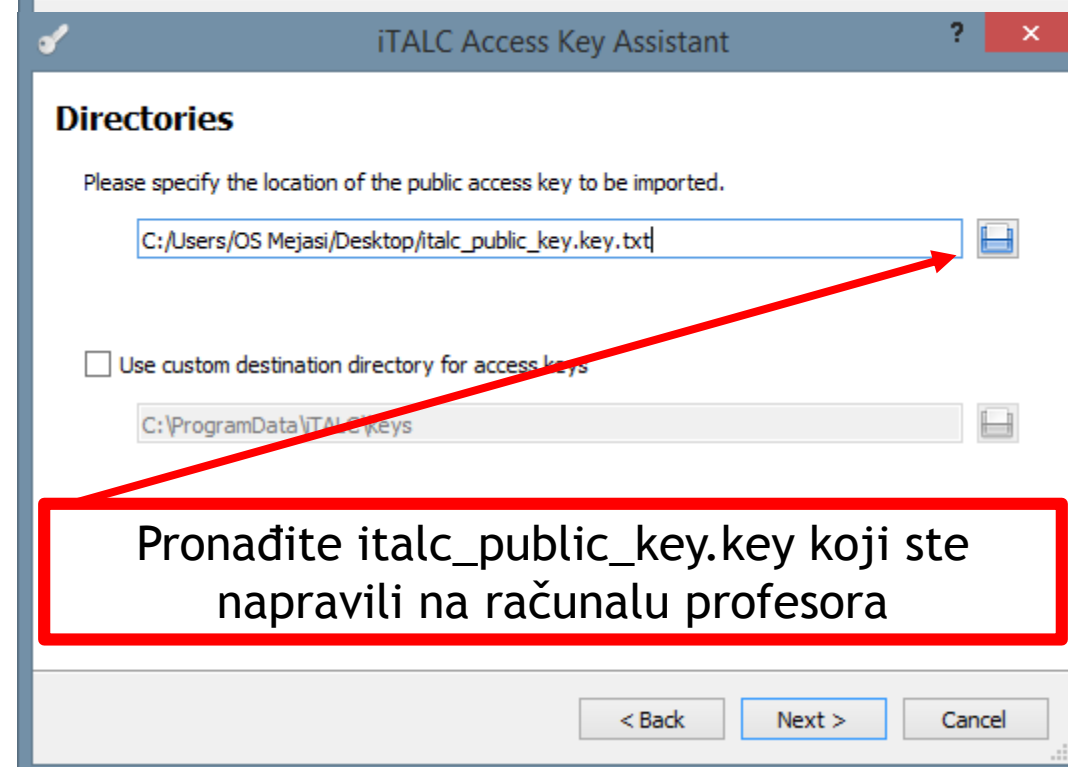
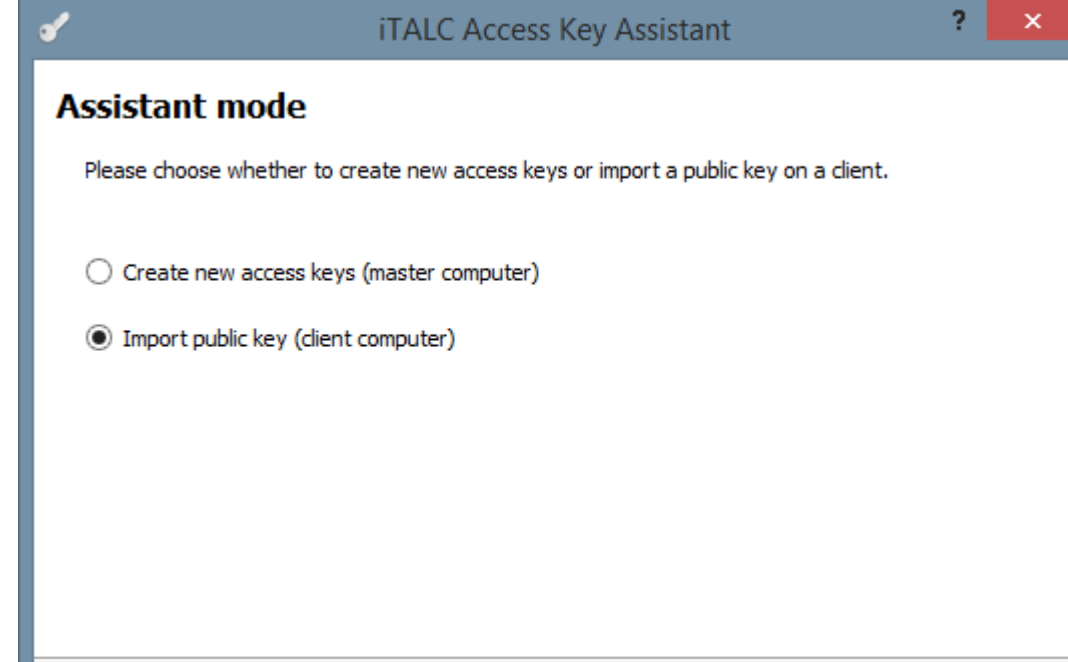
 Key file authentication Logon authentication Allow same user to access desktop without confirmation

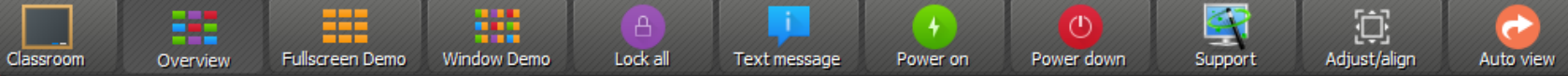
Reset

Apply



**Računalo
učenika/
studenta**





Classroom-Manager

Classrooms/computers IP-address

+ Add computer
+ Add classroom

Show usernames

Use the context-menu (right mouse-button) to add/remove computers and/or classrooms.

Export to text file

Add computer

Client settings

IP/hostname

Name

MAC address

Classroom Informatika

Type Student computer

OK Cancel

Ime računala

Ime po Vašoj želji

Nije potrebno unijeti MAC addressu

Control Panel > System and Security > System

View basic information about your computer

Windows edition
Windows 7 Ultimate
Copyright © 2009 Microsoft Corporation. All rights reserved.
Service Pack 1

System

Rating: 3.2 Windows Experience Index

Processor: AMD Turion(tm) 64 X2 TL-62 2.10 GHz

Installed memory (RAM): 4.00 GB (3.19 GB usable)

System type: 32-bit Operating System

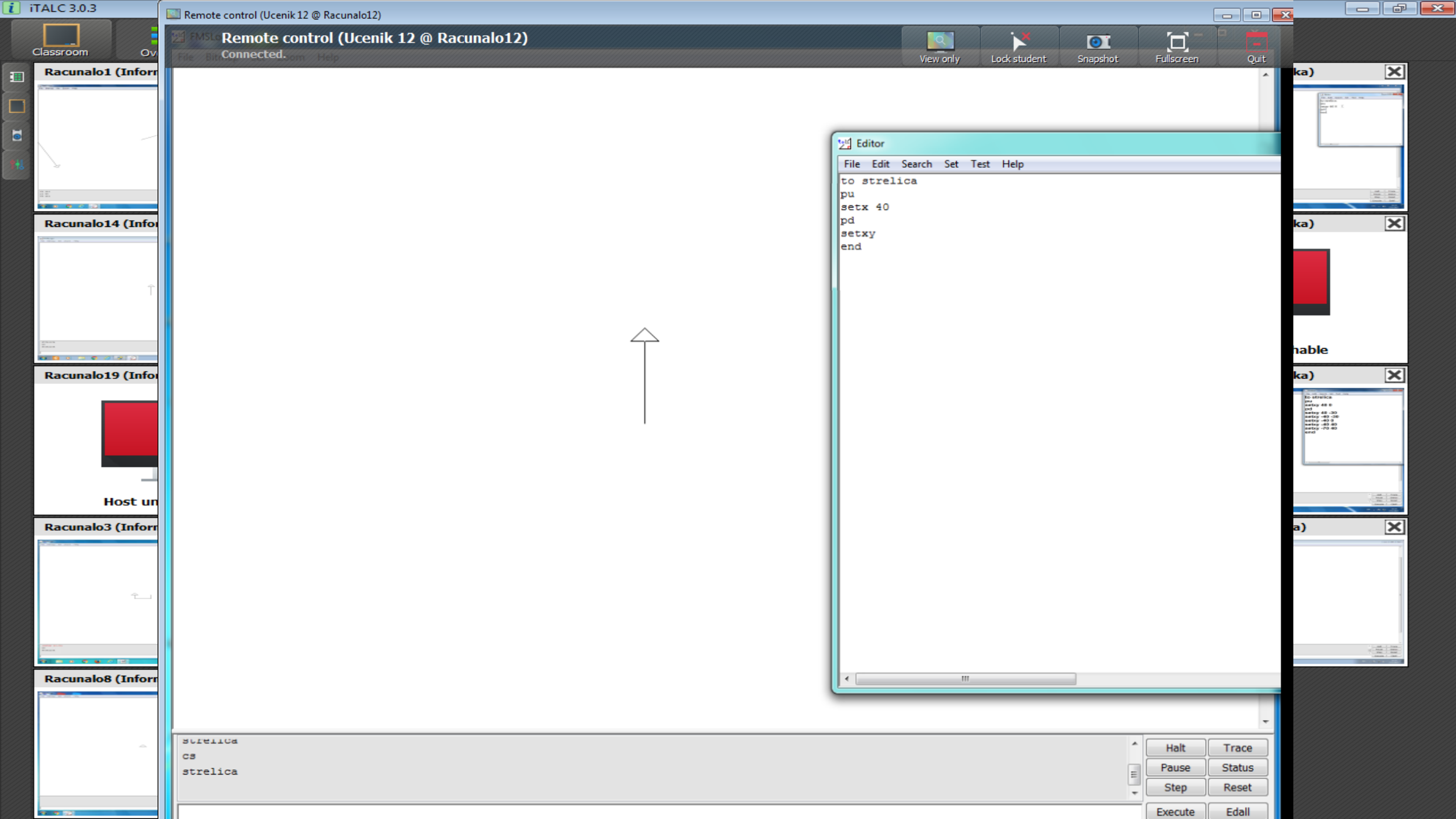
Pen and Touch: No Pen or Touch Input is available for this Display

Computer name, domain, and workgroup settings

Computer name: HOME-PC
Full computer name: HOME-PC

Change settings





Remote control (Ucenik 12 @ Racunalo12)

File Edit View Help

View only Lock student Snapshot Fullscreen Quit

Editor

File Edit Search Set Test Help

```
to strelica
pu
setx 40
pd
setxy
end
```



```
strelica
cs
strelica
```

Halt Trace
Pause Status
Step Reset
Execute Edall

**HVALA NA
PÁŽŇI**

